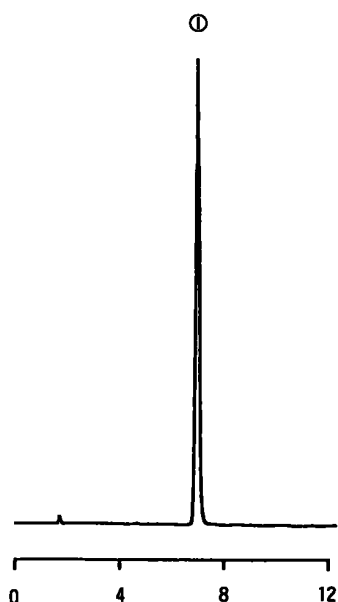


ハロペリドールの分析

Haloperidol



Analytical Conditions

| | |
|--------------|--|
| Column | : L-column ODS 4.6mm × 150mm |
| Mobile phase | : Acetonitrile/ 20mM NaH ₂ PO ₄ Buffer(pH6.9) =45/55 |
| Flow rate | : 1mL/min |
| Temp. | : 40 |
| Detector | : UV245nm 0.16AUFS |
| Sample | : ハロペリドール (Haloperidol) |

