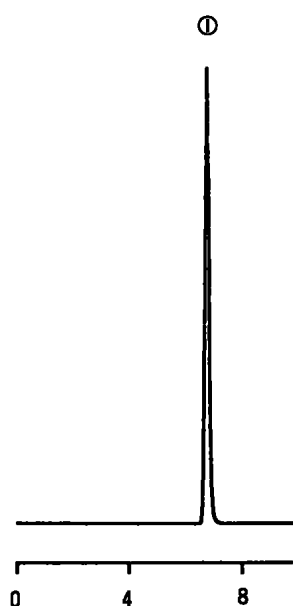


## クロルプロマジンの分析

### Chlorpromazine



#### Analytical Conditions

Column	: L-column ODS 4.6mm × 150mm
Mobile phase	: Acetonitrile/ 20mM NaH <sub>2</sub> PO <sub>4</sub> Buffer(pH6.9) =8/2
Flow rate	: 1mL/min
Temp.	: 40
Detector	: UV255nm 0.16AUFS
Sample	: 塩酸クロルプロマジン (Chlorpromazine hydrochloride)

