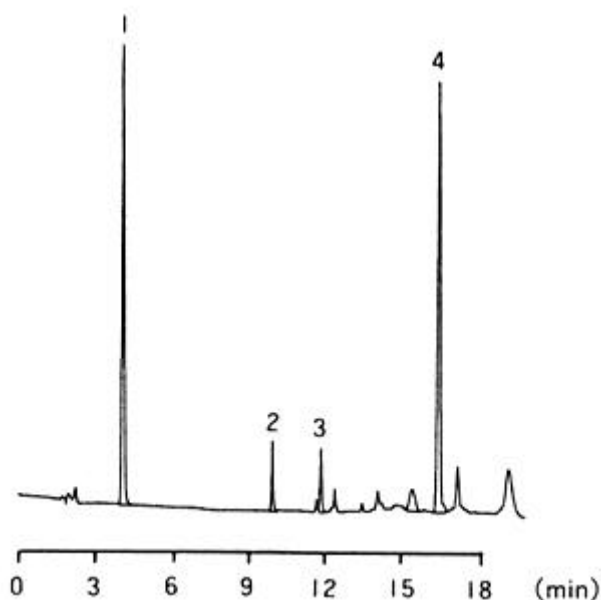


育毛ローションの分析(1)

Analysis of a Hair Lotion (1)

Analytical Conditions

Column	: L-column ODS 4.6mm × 150mm	Flow rate	: 1mL/min
		Temp.	: 40
Mobile phase	: A: 10mM (Sodium)Phosphate +0.1mM EDTA 2Na (pH2.6) /Acetonitrile = 6/1 B: 10mM (Sodium)Phosphate +0.2mM EDTA 2Na (pH2.6) /Acetonitrile = 1/3 0-2min B.Conc 0% 2-10min B.Conc 0 100% 10-16min B.Conc 100% 16.01min B.Conc 0%	Detector	: UV 0-6min 275nm 6-20.8min 400nm 20.8min 275nm
		Sample	: Resorcin Takanal (感光素 301 号) Hinokitiol -Glycyrrhetic Acid



(株)島津製作所様ご提供 島津アプリケーションニュース No.L230 より