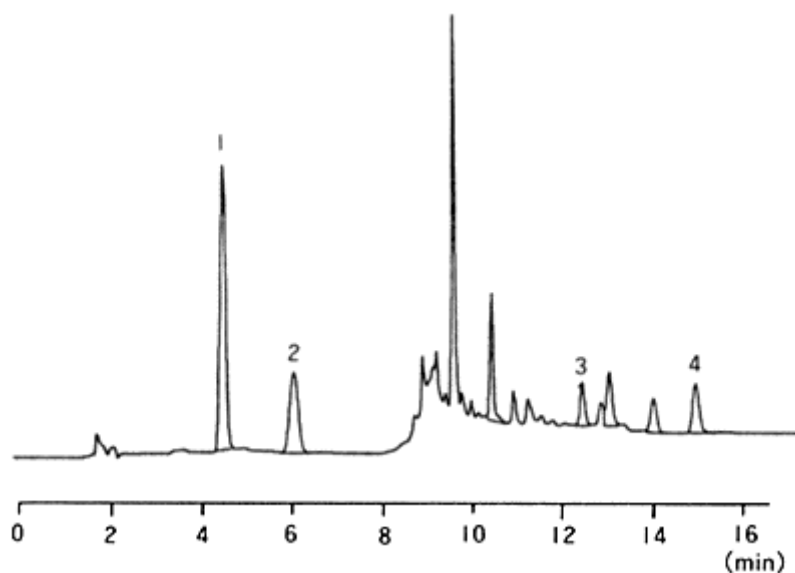


育毛ローションの分析(2)

Analysis of a Hair Lotion (2)

Analytical Conditions

Column	: L-column ODS 4.6mm × 150mm	Flow rate	: 1mL/min
Mobile phase	: A: 10mM (Sodium)Phosphate +100mM NaClO ₄ (pH2.6) /Acetonitrile = 10/1 B: 10mM (Sodium)Phosphate +100mM NaClO ₄ (pH2.6) /Acetonitrile = 1/1 0-4.9min B.Conc 5% 5min B.Conc 70% 5-16min B.Conc 70% 16.1min B.Conc 5%	Temp.	: 40
		Detector	: UV 0-7min 240nm 7-14.5min 220nm 14.5-20.4min 370nm 20.4min 240nm
		Sample	: Resorcin Swertiamarin Cepharanthine Takanal (感光素 301 号)



(株)島津製作所様ご提供 島津アプリケーションニュース No.L230 より