

ガソリンの分析

Analysis of Gasoline

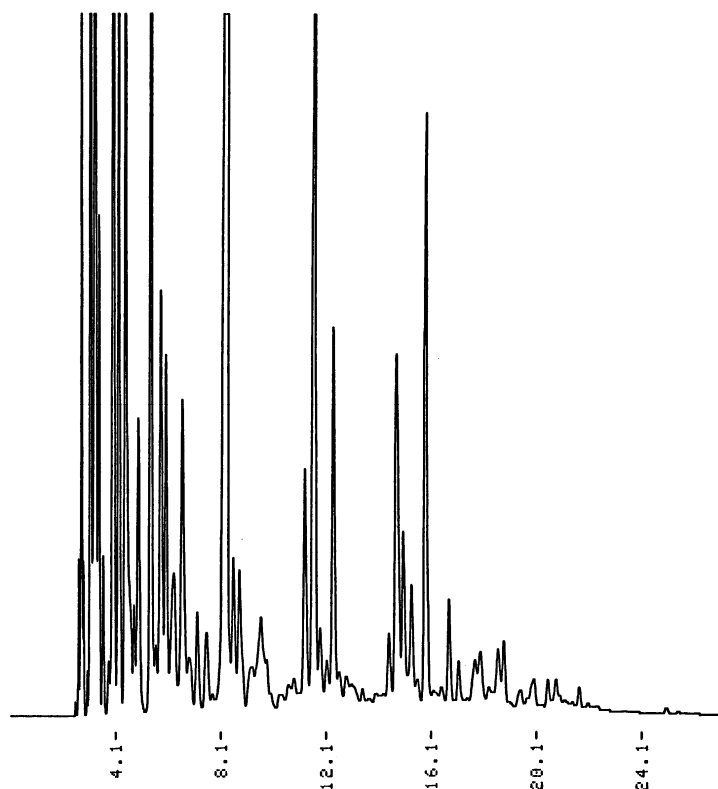


Fig. Chromatogram of Gasoline.

【Analytical conditions】

Column: **G-column G-100** 40 m L. × 1.2 mm I.D. 2 μ m film thickness
Flow rate: He 20 mL/min
C.Temperature: 40°C (2 min hold) → 6°C/min → 170°C
Detection: FID
Injection volume: 1 μ L
System: -