

軽油の分析

Analysis of Light oil

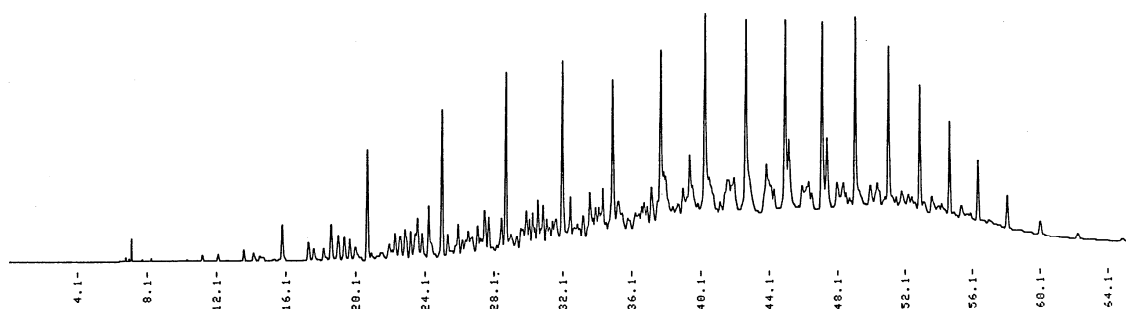


Fig. Chromatogram of Light oil.

【Analytical conditions】

Column: **G-column G-100** 120 m L.(40 m L.×3)×1.2 mm I.D. 1 μm film thickness
Flow rate: He 20 mL/min
C.Temperature: 50°C(10 min hold)→5°C/min→280°C
Detection: FID
Injection volume: 1 μL
System: -