

パラフィン (mp.52~54°C) の分析

Analysis of Paraffin

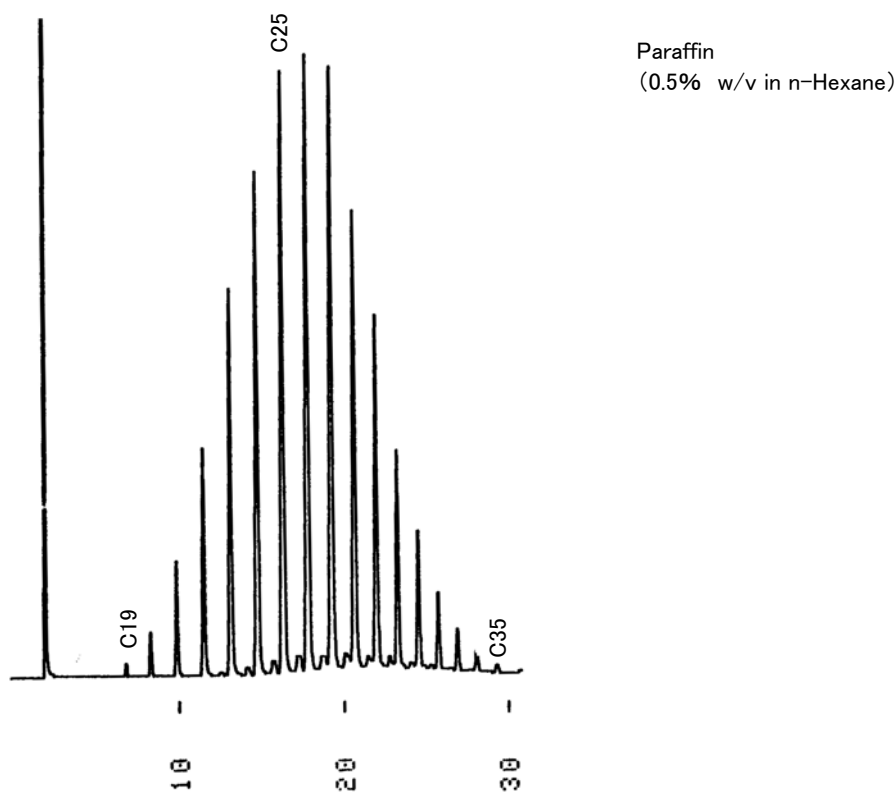


Fig. Chromatogram of Paraffin.

【Analytical conditions】

Column:	G-column G-205 40 m L. × 1.2 mm I.D. 0.1 μm film thickness
Flow rate:	He 20 mL/min
C.Temperature:	140°C → 5°C/min → 280°C
Detection:	FID
Injection volume:	1 μL
System:	-