

パラフィン(C25~C45)の分析

Paraffin

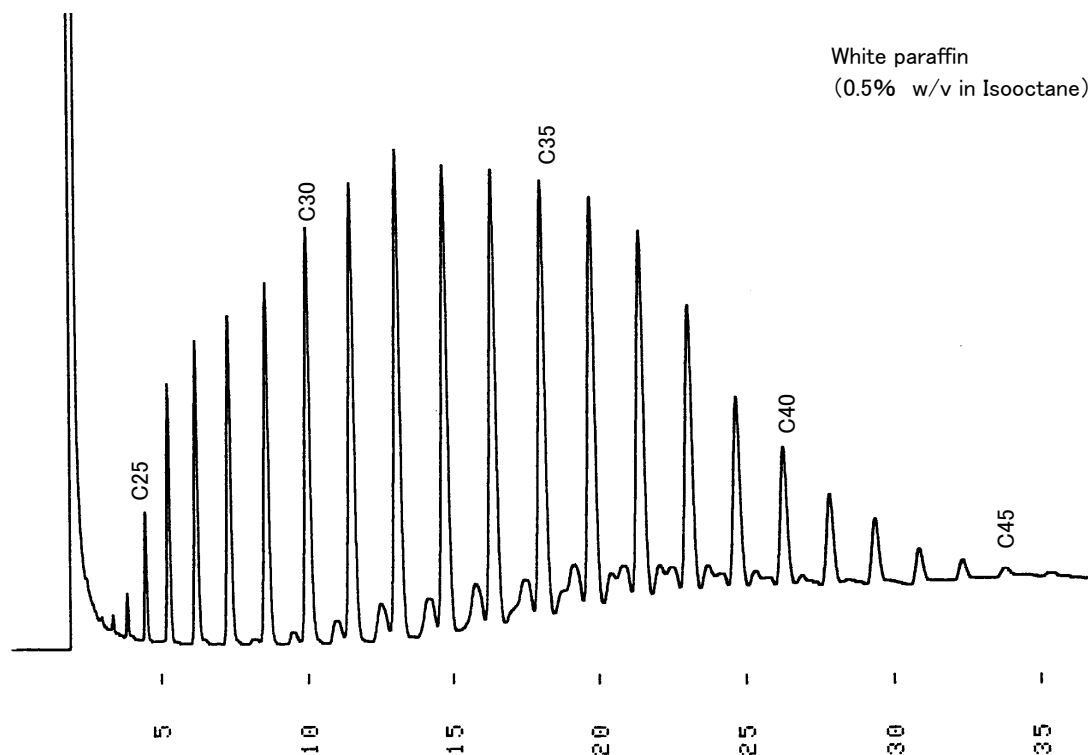


Fig. Chromatogram of Paraffin.

【Analytical conditions】

Column:	G-column G-205 40 m L. × 1.2 mm I.D. 0.1 μm film thickness
Flow rate:	He 20 mL/min
C.Temperature:	220°C → 3°C/min → 320°C
Detection:	FID
Injection volume:	1 μL
System:	-