

アルコール類の分析

Analysis of Alcohols

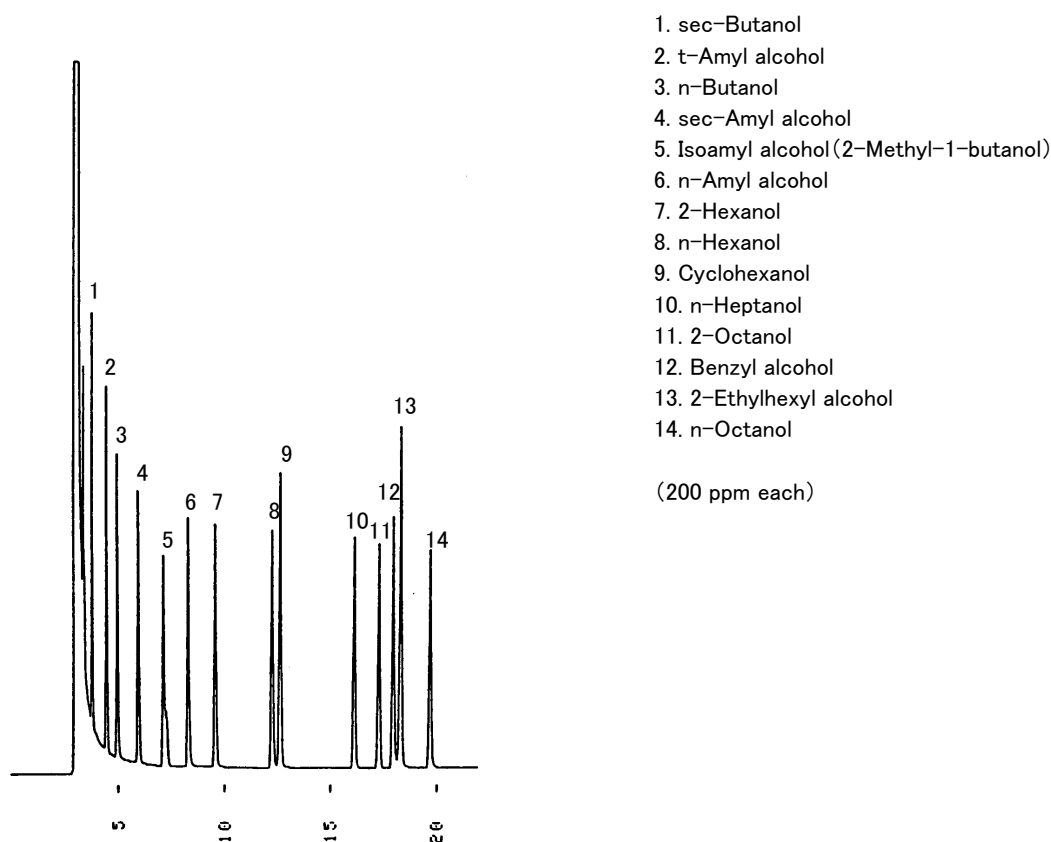


Fig. Chromatogram of Alcohols.

【Analytical conditions】

Column:	G-column G-100 40 m L. × 1.2 mm I.D. 2 μm film thickness
Flow rate:	He 22 mL/min
C.Temperature:	45°C (5 min hold) → 5°C/min → 130°C
Detection:	FID
Injection volume:	0.6 μL
System:	-