

## カテコール類の分析

## Analysis of Catechols

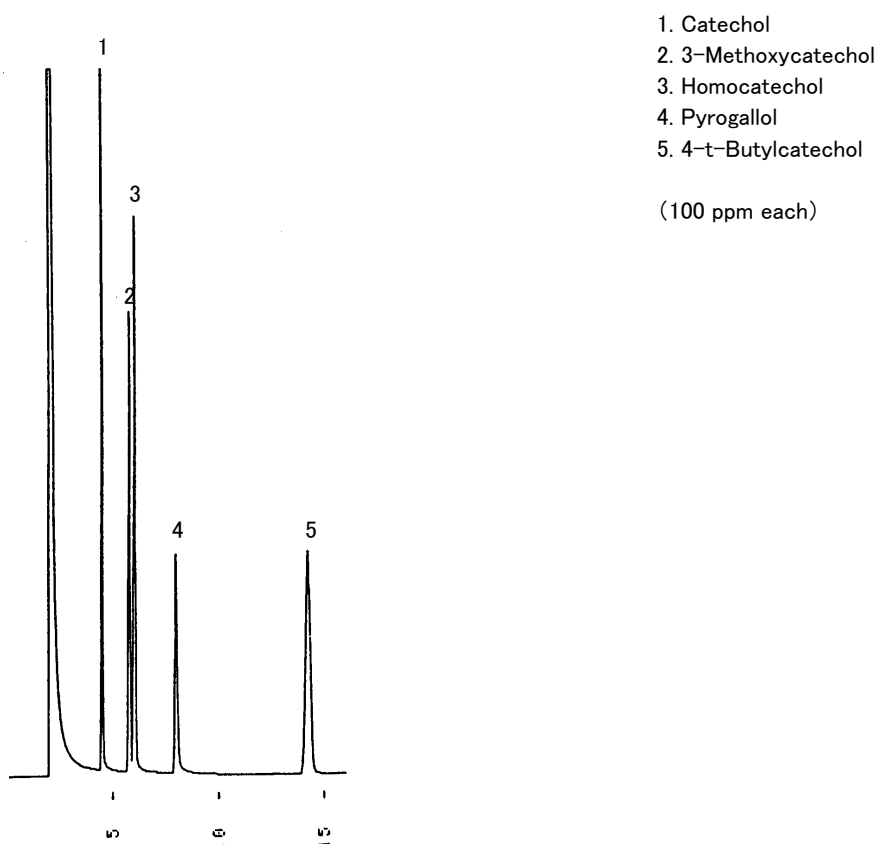


Fig. Chromatogram of Catechols.

## 【Analytical conditions】

Column: **G-column G-100** 40 m L. × 1.2 mm I.D. 2 μm film thickness  
Flow rate: He 24 mL/min  
C.Temperature: 150°C  
Detection: FID  
Injection volume: 1 μL  
System: -