

## シリコンゴム抽出物の分析

## Analysis of Extraction from silicon rubber

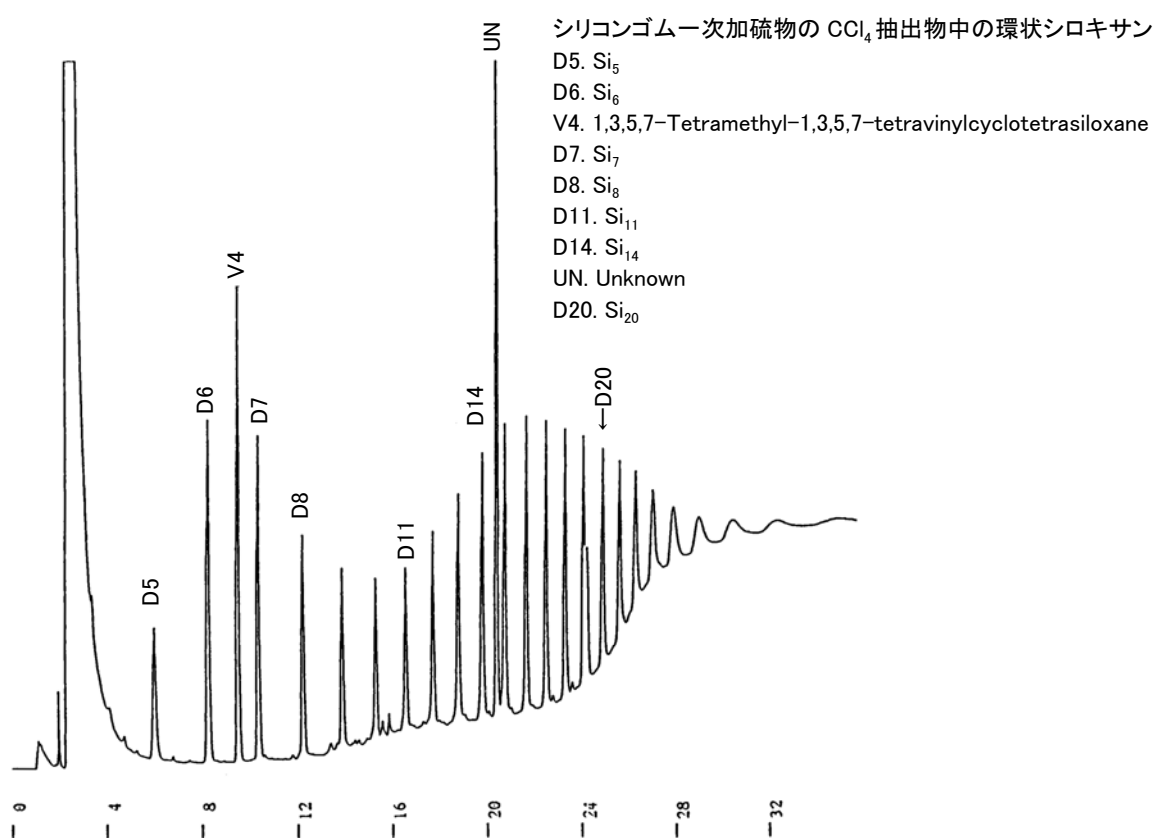


Fig. Chromatogram of extraction from siliocion rubber.

## 【Analytical conditions】

Column:	<b>G-column G-250</b> 20 m L. × 1.2 mm I.D. 1 $\mu$ m film thickness
Flow rate:	$\text{N}_2$ 20 mL/min
C.Temperature:	60°C (2 min hold) → 10°C/min → 300°C
Detection:	FID
Injection volume:	2 $\mu$ L
System:	GC-14A (Shimadzu Co.)