

## 水中のジオール類の分析

## Analysis of Diols in water

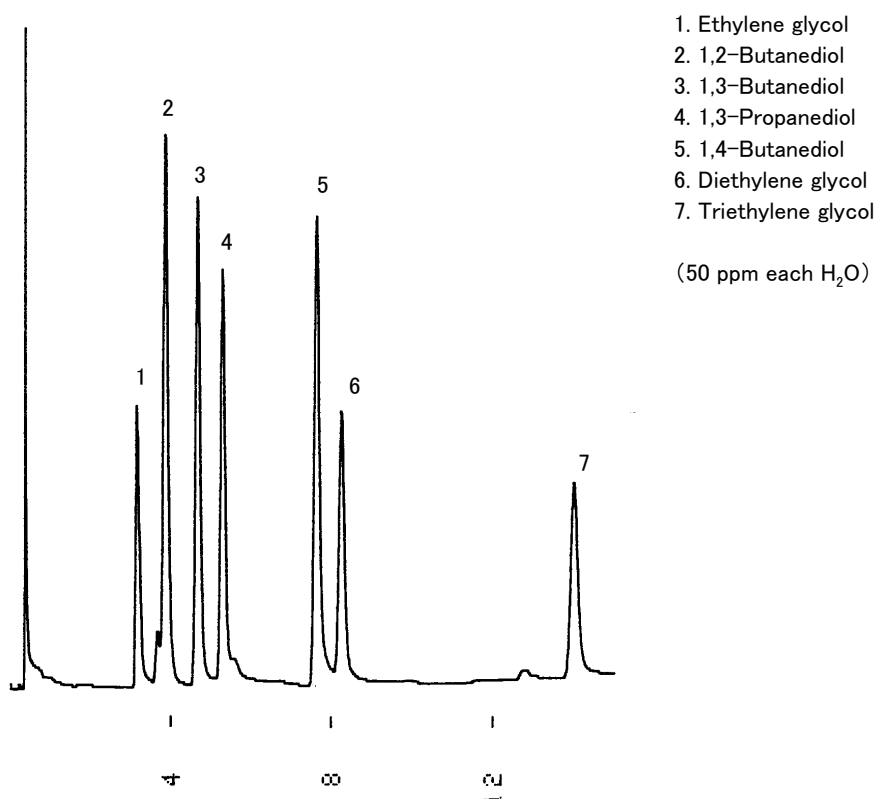


Fig. Chromatogram of Diols in water.

## 【Analytical conditions】

Column:	<b>G-column G-300</b> 10 m L. × 1.2 mm I.D. 0.5 μ m film thickness
Flow rate:	He 30 mL/min
C.Temperature:	80°C → 5°C/min → 150°C
Detection:	FID
Injection volume:	2 μ L
System:	GC-9A (Shimadzu Co.)