

## エタノールアミン類の分析

## Analysis of Ethanolamines

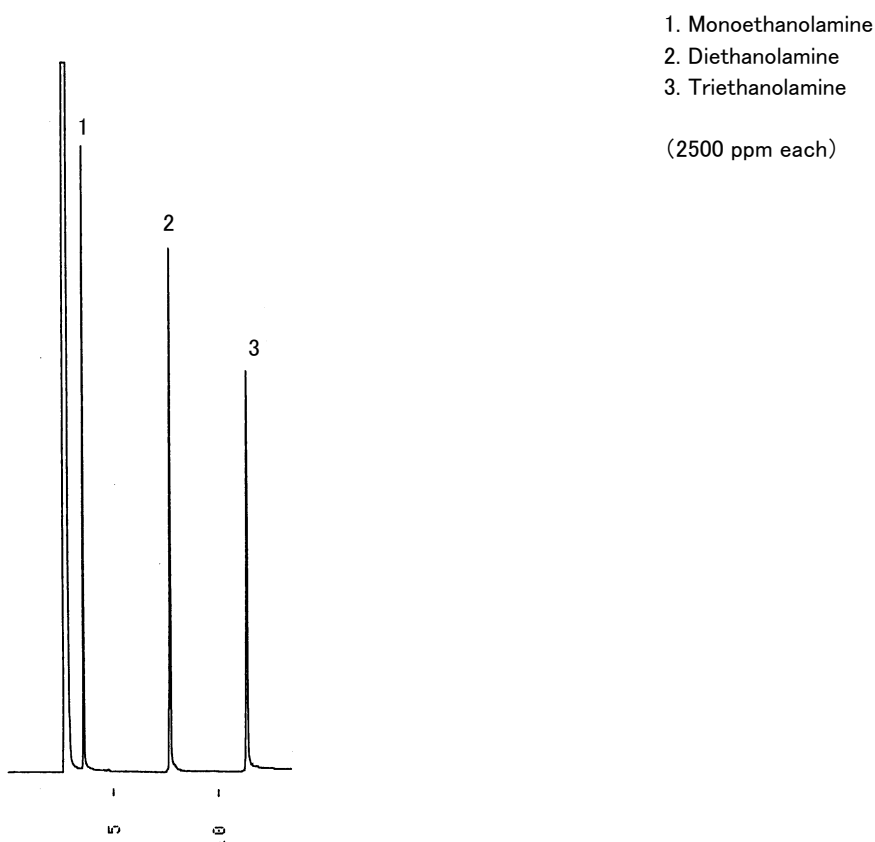


Fig. Chromatogram of Ethanolamines.

## 【Analytical conditions】

Column: **G-column G-205** 40 m L. × 1.2 mm I.D. 5 μm film thickness  
Flow rate: He 20 mL/min  
C.Temperature: 80°C → 15°C/min → 250°C  
Detection: FID  
Injection volume: 1 μL  
System: -