

PCB の分析

Analysis of PCB

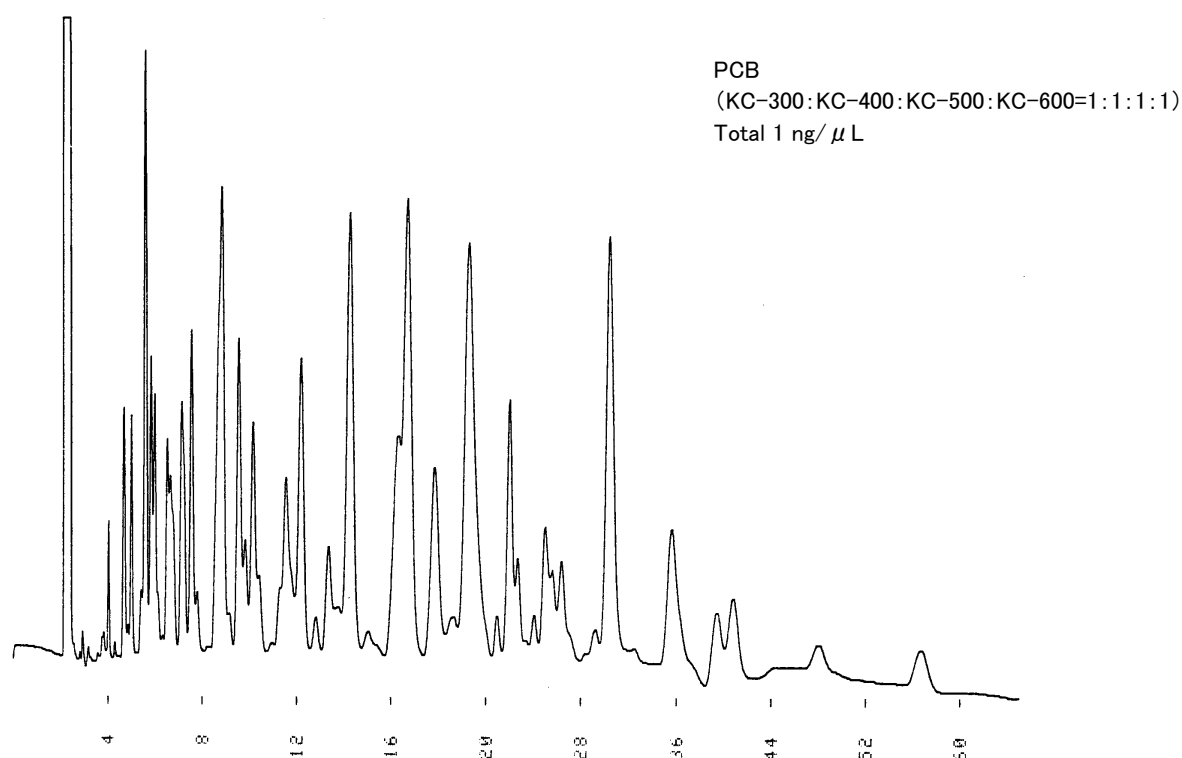


Fig. Chromatogram of PCB.

【Analytical conditions】

Column: **G-column G-100** 40 m L. \times 1.2 mm I.D. 0.5 μ m film thickness
Flow rate: He 20 mL/min; Make-up gas: N₂ 30 mL/min
C.Temperature: 200°C
Detection: ECD
Injection volume: 2 μ L
System: -
* リードキャピラリー (RN-7, 0.53 mm I.D.) 接続