

糖の分析

Analysis of Sweeteners

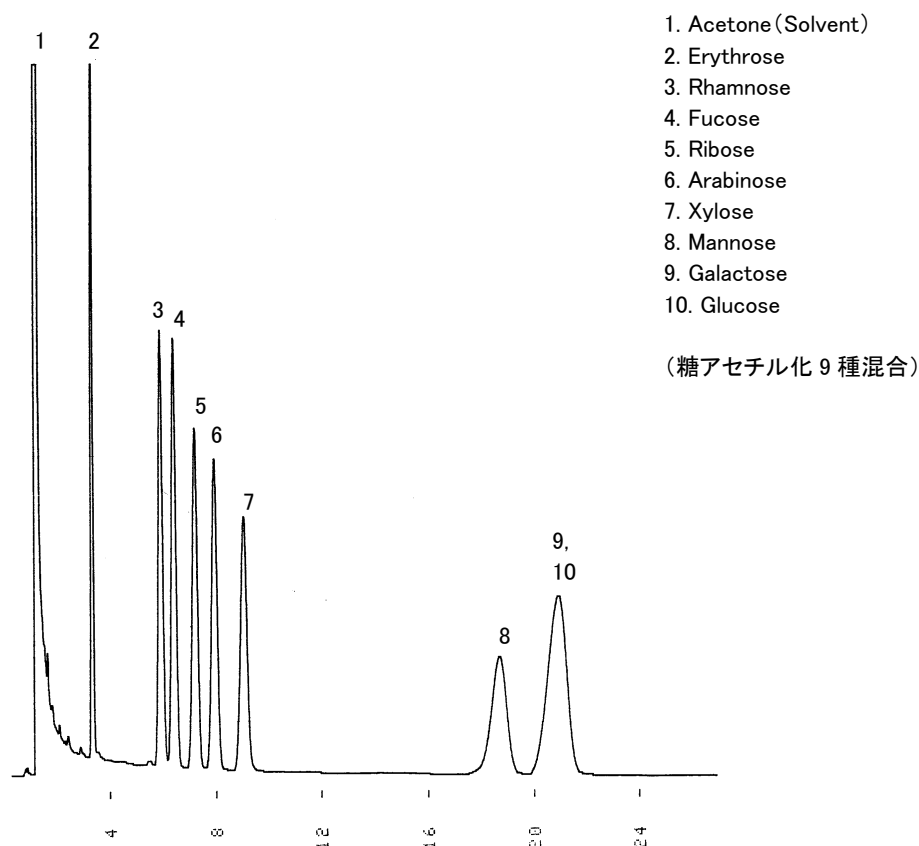


Fig. Chromatogram of Sweeteners.

【Analytical conditions】

Column:	G-column G-300 20 m L. × 1.2 mm I.D. 0.5 μ m film thickness
Flow rate:	He 19.38 mL/min
C.Temperature:	210°C
Detection:	FID
Injection volume:	1 μ L
System:	GC-14A (Shimadzu Co.)