

農薬の分析

Analysis of Agricultural chemicals

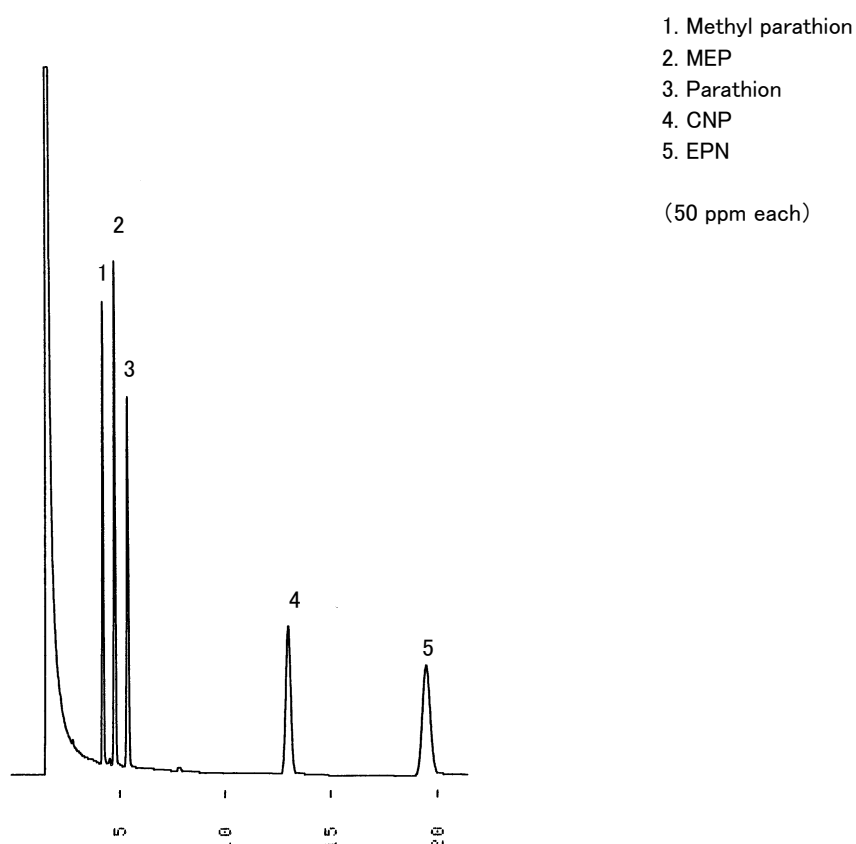


Fig. Chromatogram of Agricultural chemicals.

【Analytical conditions】

Column: **G-column G-100** 40 m L. × 1.2 mm I.D. 0.5 μm film thickness
Flow rate: He 27 mL/min
C.Temperature: 200°C
Detection: FID
Injection volume: 1 μL
System: -