

農薬の分析

Analysis of Agricultural chemicals

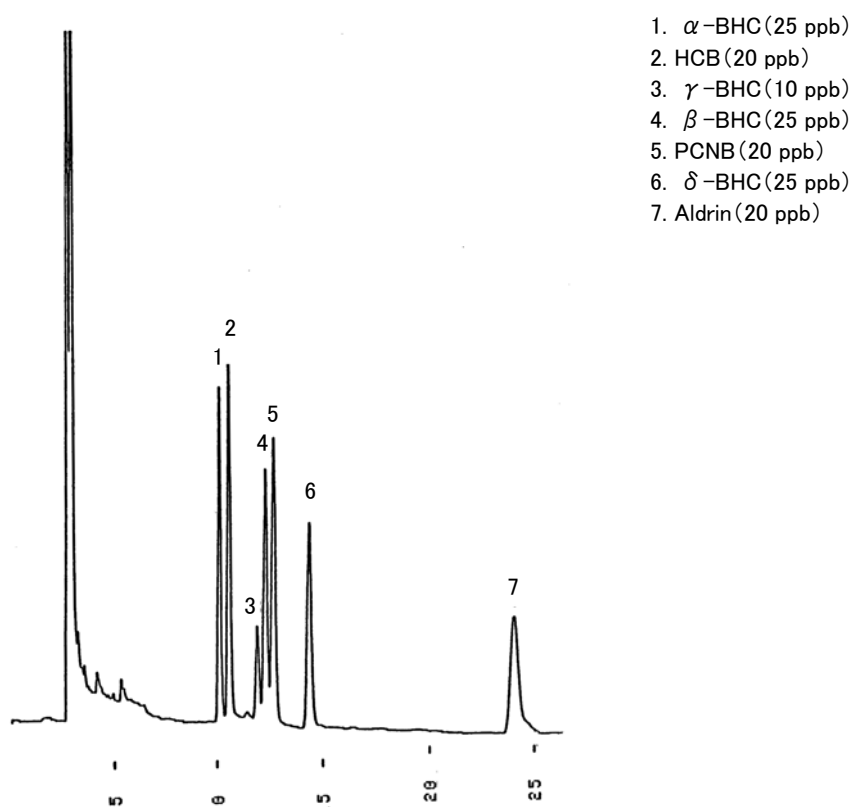


Fig. Chromatogram of Agricultural chemicals.

【Analytical conditions】

Column: **G-column G-205** 40 m L. \times 1.2 mm I.D. 0.5 μ m film thickness
Flow rate: He 20 mL/min; Make-up gas: N₂ 21 mL/min
C.Temperature: 170°C
Detection: ECD
Injection volume: 2 μ L
System: -