

## 農薬の分析

## Analysis of Agricultural chemicals

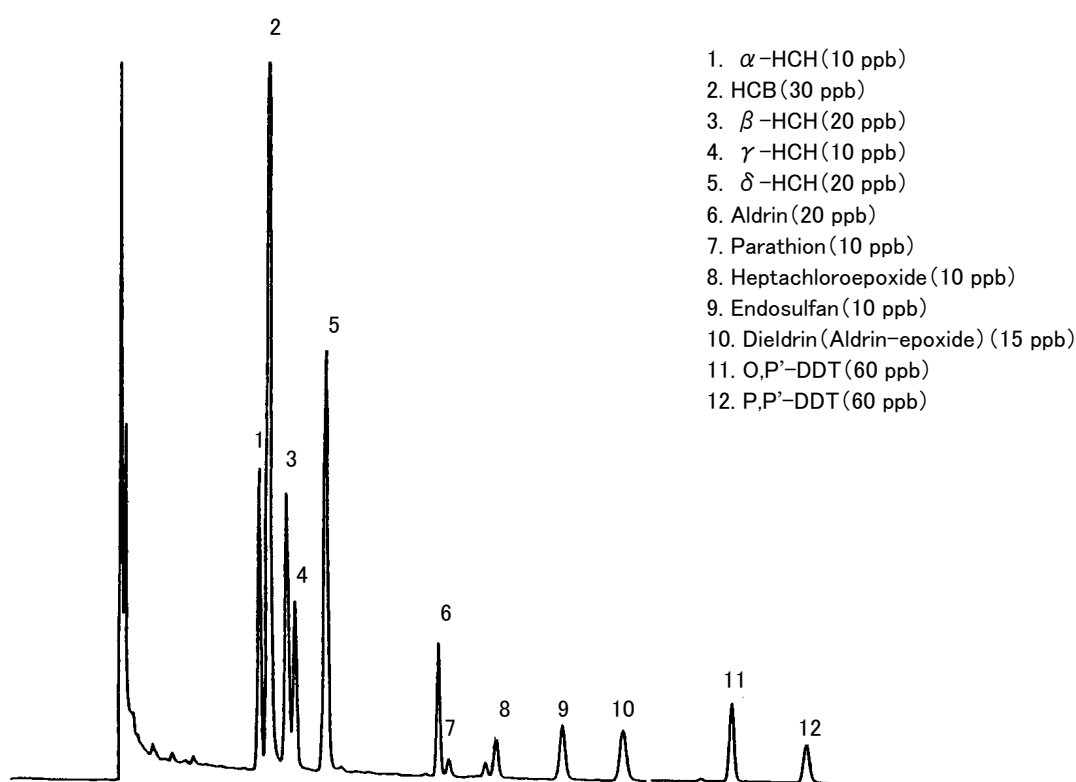


Fig. Chromatogram of Agricultural chemicals.

## 【Analytical conditions】

Column: **G-column G-205** 40 m L.  $\times$  1.2 mm I.D. 0.5  $\mu$  m film thickness  
Flow rate: He 20 mL/min; Make-up gas: N<sub>2</sub> 50 mL/min  
C.Temperature: 190°C  
Detection: ECD  
Injection volume: 1  $\mu$  L  
System: HP 5890A