

農薬の分析

Analysis of Agricultural chemicals

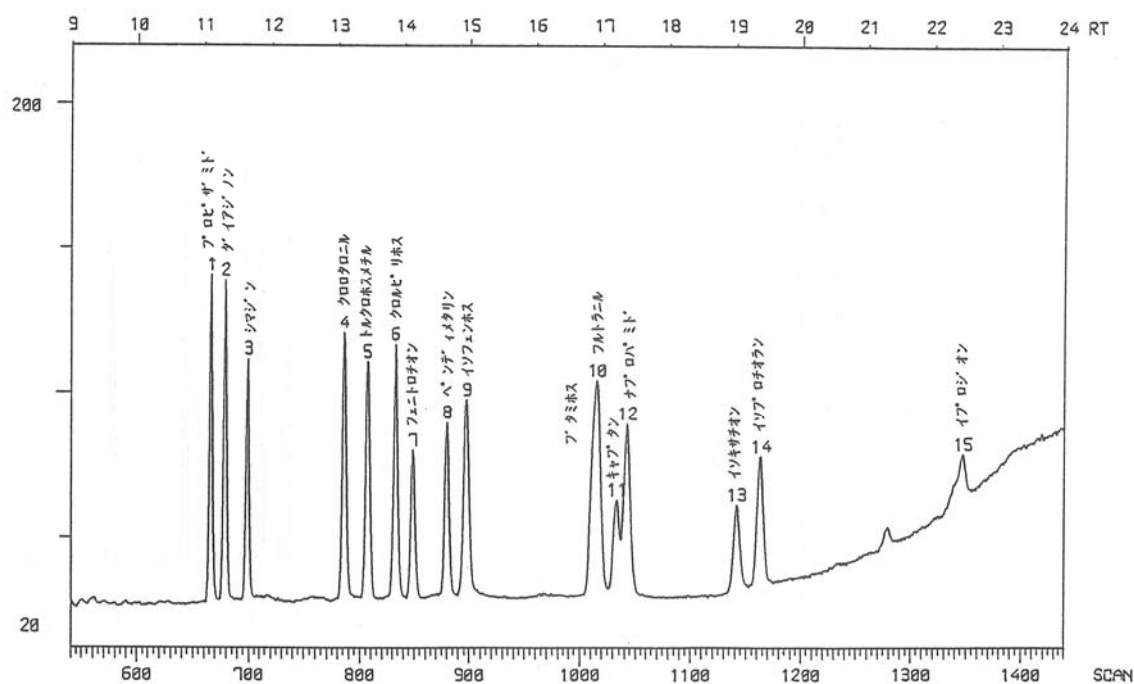


Fig. Chromatogram of Agricultural chemicals.

【Analytical conditions】

Column: **G-column G-250** 40 m L. × 1.2 mm I.D. 0.5 μm film thickness
 Flow rate: He 20 mL/min
 C.Temperature: 100°C (2 min) → 20°C/min → 220°C → 2°C/min → 240°C → 8°C/min → 280°C
 Detection: TIC
 Injection volume: 2 μL (50 ppm each)
 System: MS: JEOL DX-300