

水中のグリセリンの分析
Analysis of Glycerin in water

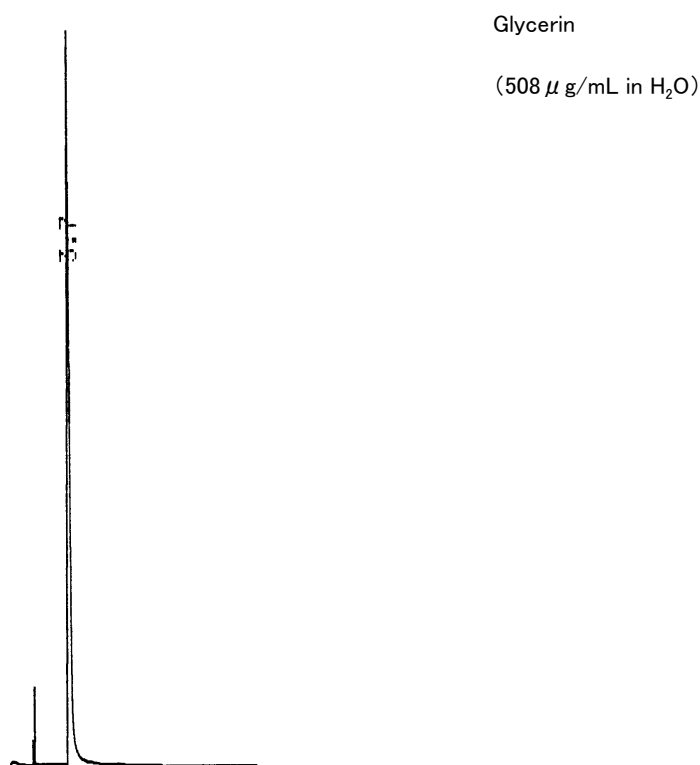


Fig. Chromatogram of Glycerin in water.

【Analytical conditions】

Column: **G-column G-250** 20 m L. \times 1.2 mm I.D. 1 μ m film thickness
Flow rate: N₂ 20 mL/min
C.Temperature: 120°C
Detection: FID
Injection volume: 2 μ L
System: GC-4CM (Shimadzu Co.)