

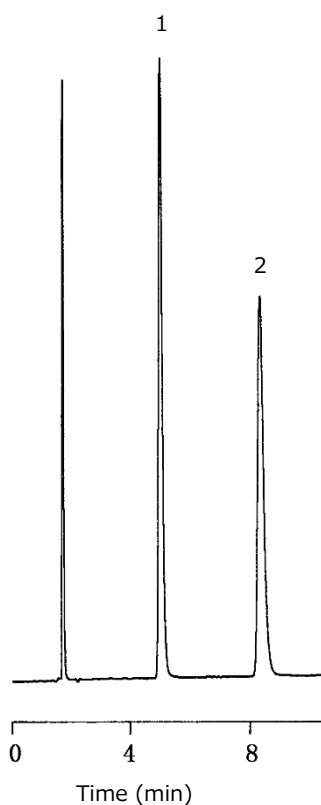
スコポラミン、アトロピン

Scopolamine, Atropine

Key words : スコポラミン アトロピン 医薬品
 Column : USP category: L1

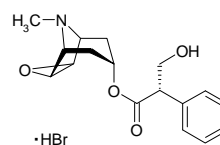
[Analytical conditions]

Column : L-column ODS (C18, 5 μ m, 12 nm), 4.6 mm I.D. \times 150 mm L.; Cat. No. 622070
 Eluent : CH₃CN/10 mM NaH₂PO₄ in H₂O (15/85)
 Flow rate : 1 mL/min
 Temperature : Room temperature
 Detection : UV 210 nm
 Injection volume : -
 System : -



Sample:

1. Scopolamine hydrobromide
 スコポラミン臭化水素酸塩



2. Atropine sulfate
 硫酸アトロピン

