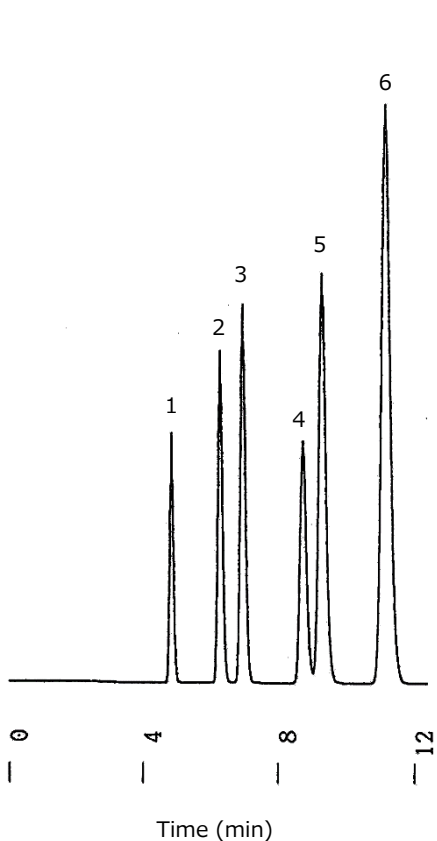


ニトロフェノール Nitrophenols

Key words : ニトロフェノール
Column : USP category: L1

[Analytical conditions]

Column : L-column ODS (C18, 5 μm, 12 nm), 4.6 mm I.D. × 150 mm L.; Cat. No. 622070
 Eluent : CH₃CN/20 mM Phosphate buffer pH 2 (30/70)
 Flow rate : 1 mL/min
 Temperature : 40°C
 Detection : UV 254 nm
 Injection volume : 1 μL
 System : -

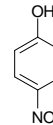


Sample:

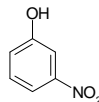
1. Phenol (1100 ppm)
フェノール



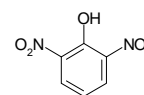
2. *p*-Nitrophenol (1070 ppm)
p-ニトロフェノール



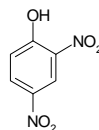
3. *m*-Nitrophenol (550 ppm)
m-ニトロフェノール



4. 2,6-Dinitrophenol (300 ppm)
2,6-ジニトロフェノール



5. 2,4-Dinitrophenol (270 ppm)
2,4-ジニトロフェノール



6. *o*-Nitrophenol (1160 ppm)
o-ニトロフェノール

