

Total Support for Japan's CSCL

CERI provide total support for your application under Japan's Chemical Substances Control Law (CSCL).

Application plan proposal

CERI will:

- ◆ Conduct a brief survey of the need to register your substance with CSCL
- ◆ Propose test designs to suit the properties of the substance
- ◆ Propose the shortest possible application schedule
- ◆ Advise on global use of test data

Test conducting

Good Laboratory Practice (GLP)

- ◆ CERI is the first GLP-certified laboratory for CSCL compliance in Japan.
- ◆ CERI conduct all the tests required by CSCL.
- ◆ CERI consult with the authorities (e.g., about test exemptions because of analogy with other chemical structures).

Support for your application

Successful applications via CERI for CSCL approval: more than 3000!

CERI

一般財団法人 化学物質評価研究機構

Chemicals Evaluation and Research Institute, Japan

Tokyo/ 1-4-25 Koraku, Bunkyo-ku, Tokyo 112-0004, Japan
Phone: +81-3-5804-6134 Fax: +81-3-5804-6140
Osaka/ 1-5-55 Aramotokita, Higashiosaka-shi, Osaka 577-0011, Japan
Phone: +81-6-6744-2045 Fax: +81-6-6744-2052

URL <http://www.cerij.or.jp>

E-mail cbc@ceri.jp

CERI conduct all tests required upon application for CACL compliance. (Data are also available for global application.)

Biodegradation test



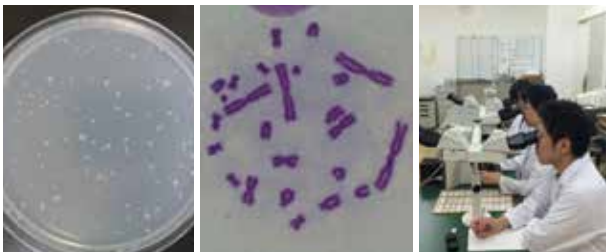
OECD test guideline (TG)
301C/301F/301D/302C

Bioaccumulation test (or Partition coefficient test)



Bioaccumulation test: OECD TG305
Partition coefficient test: OECD TG107/117

Screening toxicity test



Bacterial Reverse Mutation Test (Ames test): OECD TG471
In Vitro Mammalian Chromosomal Aberration Test: OECD TG473
Repeated Dose 28-day Oral Toxicity Study in Rodents: OECD TG407*1

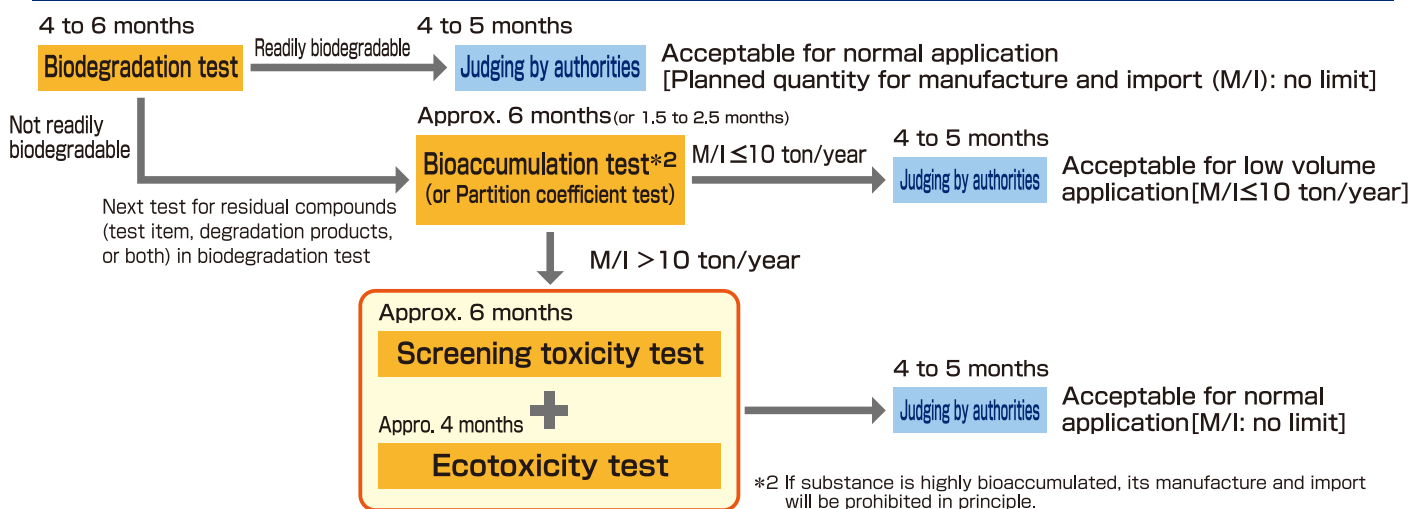
Ecotoxicity test



Freshwater Alga and Cyanobacteria, Growth Inhibition Test : OECD TG201
Daphnia sp., Acute Immobilisation Test : OECD TG202
Fish, Acute Toxicity Test : OECD TG203

*1 The following tests are also applicable; Repeated Dose 90-day Oral Toxicity Study in Rodents (OECD TG408) & Combined Repeated Dose Toxicity Study with the Reproduction/ Developmental Toxicity Screening Test (OECD TG422).

Flow of evaluation for CACL compliance (low-molecular-weight compounds)



Flow of evaluation for CACL compliance (high-molecular-weight compounds)

