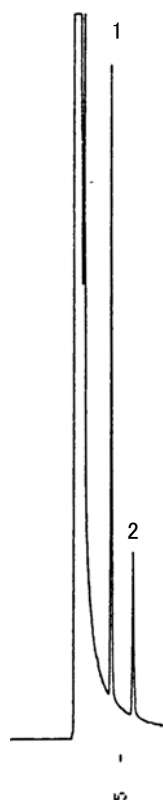


アルデヒド類の分析 Analysis of Aldehydes



1. Isovaleraldehyde
 2. n-Valeraldehyde
- (100 ppm each)

Fig. Chromatogram of Aldehydes.

【Analytical conditions】

Column: **G-column G-100** 40 m L. × 1.2 mm I.D. 2 μm film thickness
Flow rate: He 26 mL/min
C.Temperature: 45°C
Detection: FID
Injection volume: 1 μL
System: -