

シリコンゴム抽出物の分析

Analysis of Extraction from silicon rubber

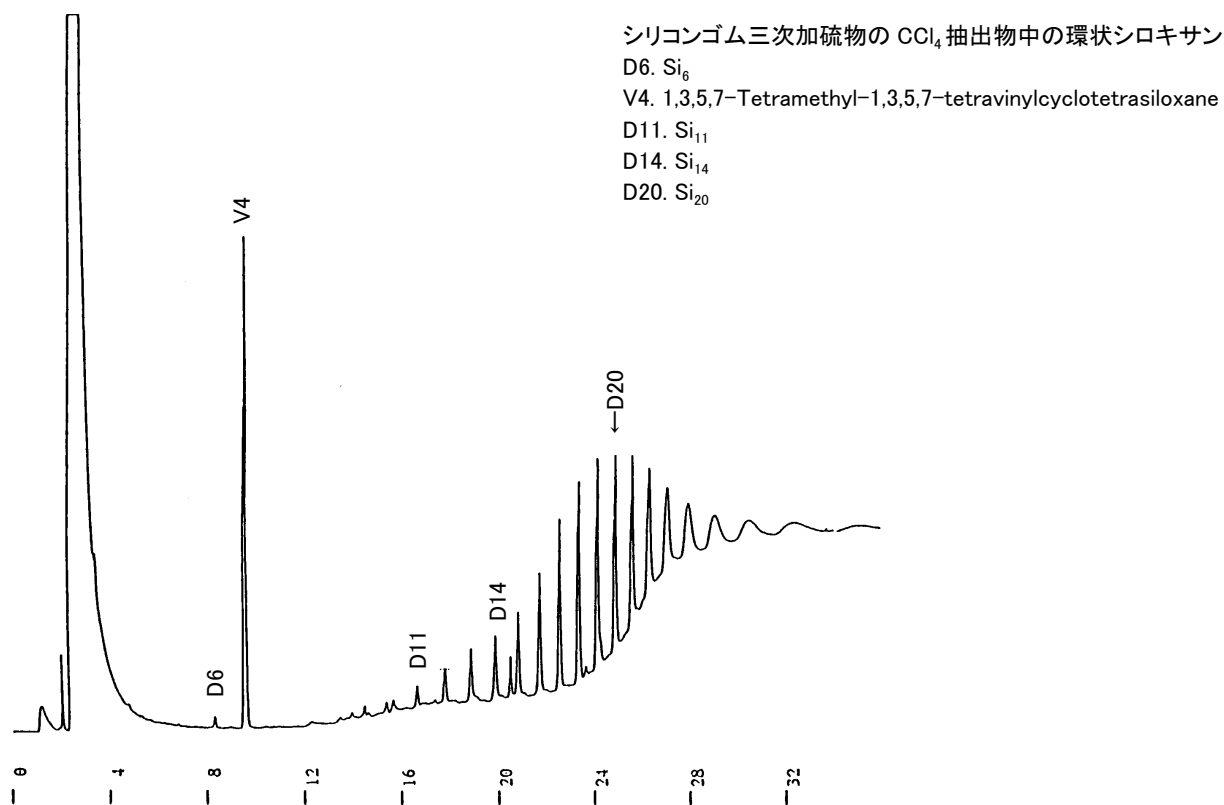


Fig. Chromatogram of extraction from silicon rubber.

【Analytical conditions】

Column:	G-column G-250 20 m L. × 1.2 mm I.D. 1 μ m film thickness
Flow rate:	N_2 20 mL/min
C.Temperature:	60°C (2 min hold) → 10°C/min → 300°C
Detection:	FID
Injection volume:	2 μ L
System:	GC-14A (Shimadzu Co.)