

芳香族アミンの分析

Analysis of Aromatic amines

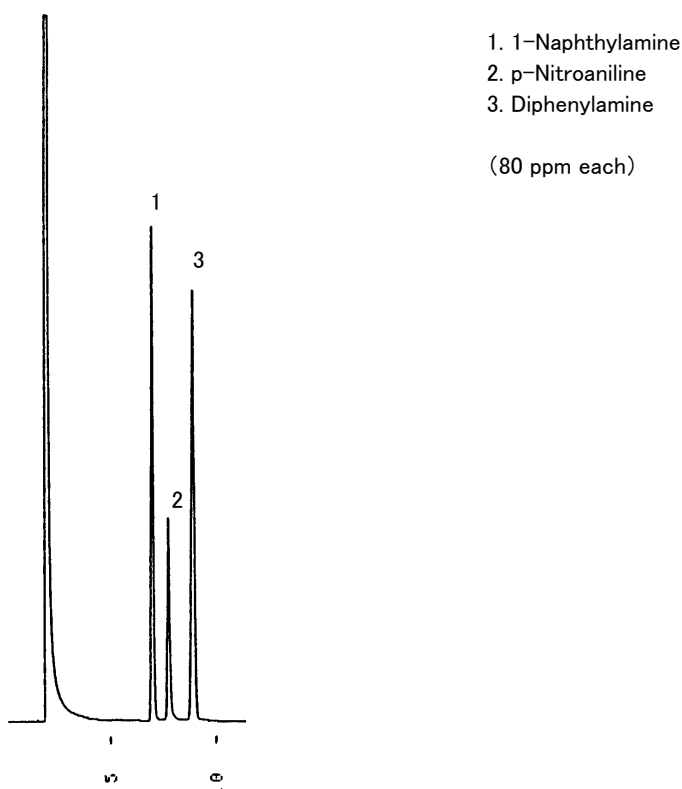


Fig. Chromatogram of Aromatic amines.

【Analytical conditions】

Column: **G-column G-100** 40 m L. × 1.2 mm I.D. 2 μm film thickness
Flow rate: He 24 mL/min
C.Temperature: 180°C
Detection: FID
Injection volume: 1 μL
System: -