

o-ブロモトルエン中の異性体の分析

Analysis of Isomer in o-Bromotoluene

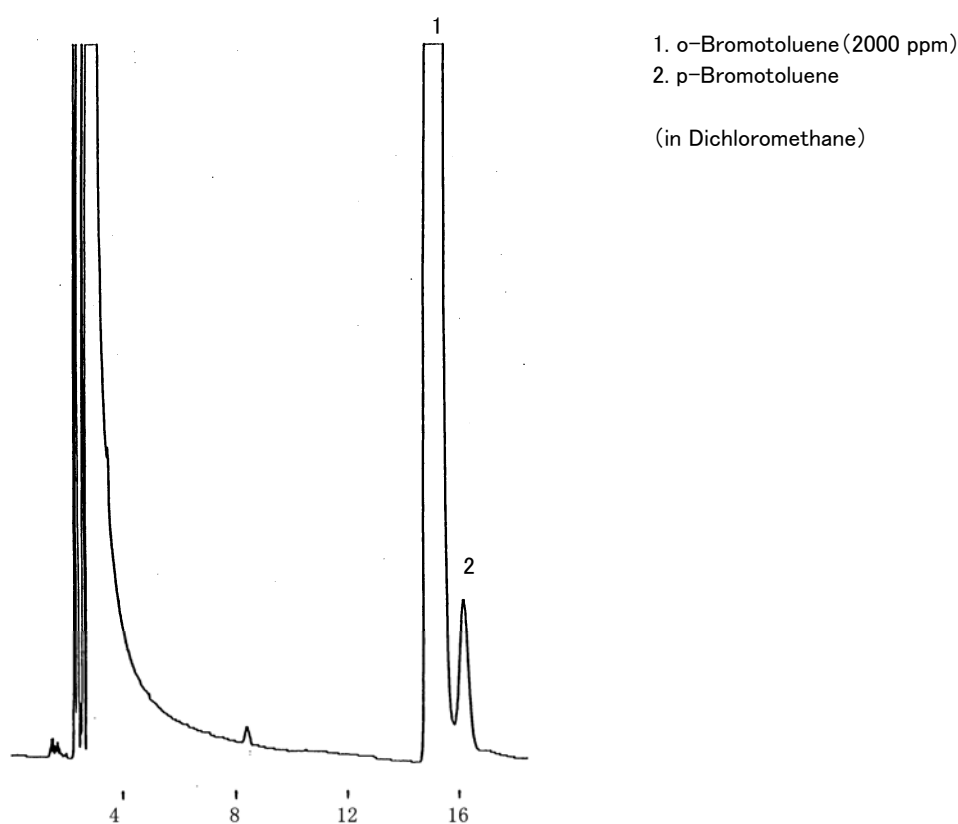


Fig. Chromatogram of isomer in o-Bromotoluene.

【Analytical conditions】

Column: **G-column G-300** 40 m L. × 1.2 mm I.D. 1 μm film thickness
Flow rate: He 20 mL/min
C.Temperature: 85°C
Detection: FID
Injection volume: 0.5 μL
System: GC-9A (Shimadzu Co.)